

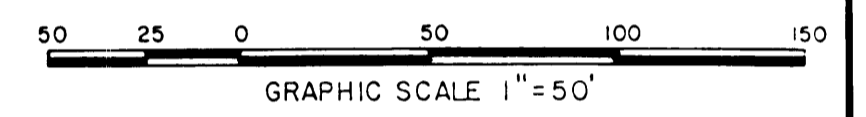
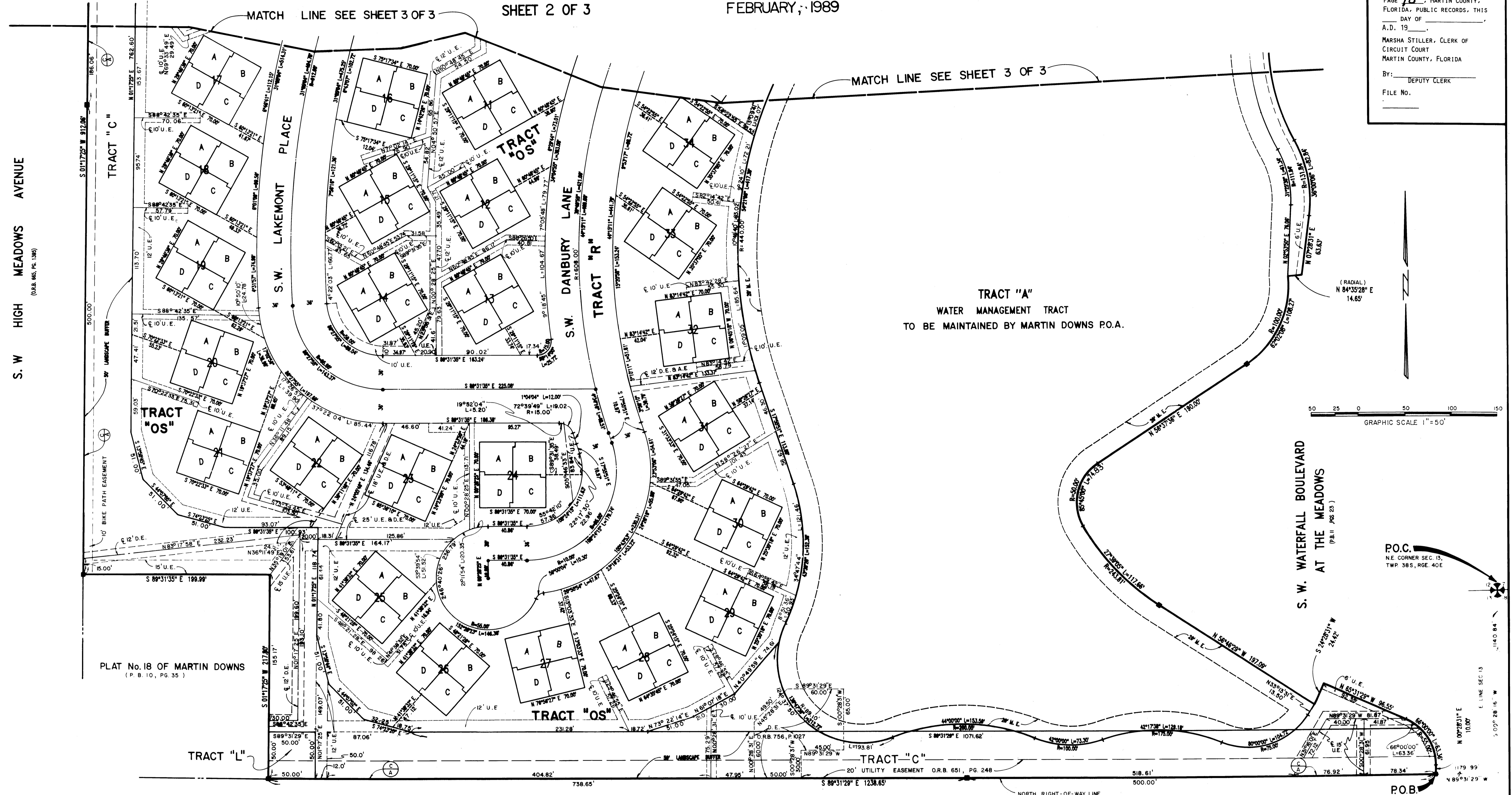
# A PLAT OF PARCEL 50 AT THE MEADOWS

BEING PLAT NO. 46 OF MARTIN DOWNS A P.U.D.  
LYING IN SECTIONS 12 AND 13, TOWNSHIP 38 SOUTH, RANGE 40 EAST,  
MARTIN COUNTY, FLORIDA.

FEBRUARY, 1989

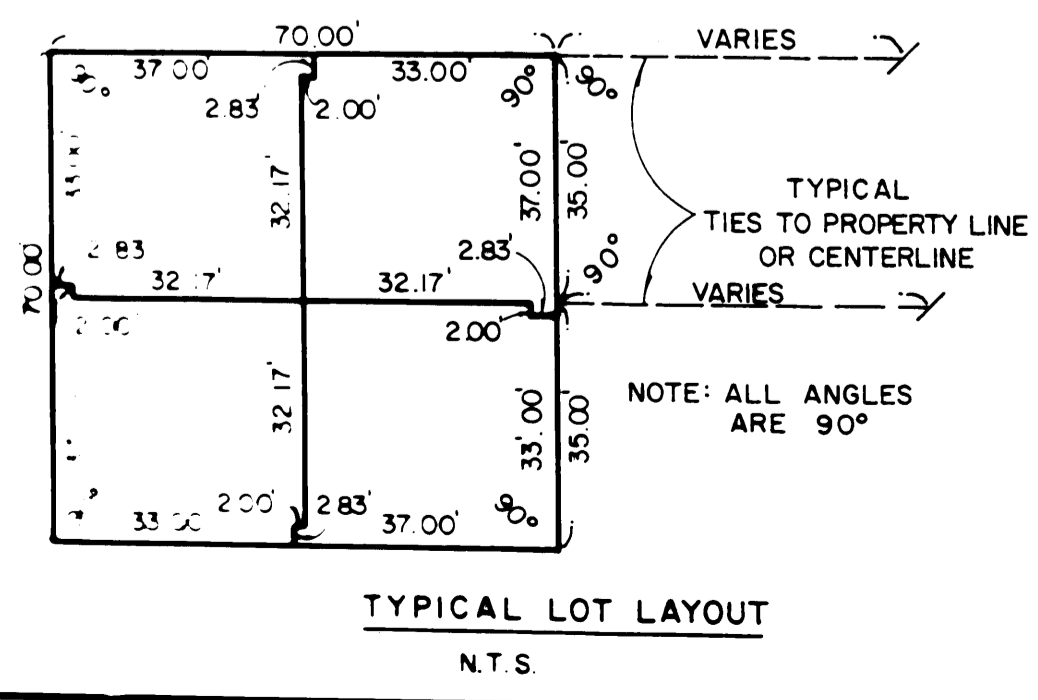
SHEET 2 OF 3

I, MARSHA STILLER, CLERK OF THE CIRCUIT COURT OF MARTIN COUNTY, FLORIDA, HEREBY CERTIFY THAT THIS PLAT WAS FILED FOR RECORD IN PLAT BOOK 11, PAGE 75, MARTIN COUNTY, FLORIDA, PUBLIC RECORDS, THIS DAY OF \_\_\_\_\_ A.D. 19\_\_\_\_. MARSHA STILLER, CLERK OF CIRCUIT COURT MARTIN COUNTY, FLORIDA  
BY: \_\_\_\_\_ DEPUTY CLERK  
FILE NO. \_\_\_\_\_



P.O.C.  
N.E. CORNER SEC. 13,  
TWP. 38 S., RGE. 40 E.

P.O.B.



MARTIN DOWNS BOULEVARD (S. R. 714)  
(O.R.B. 461, PG. 420)

**Landmark Surveying & Mapping Inc.**  
1850 FOREST HILL BOULEVARD  
PH. (305)433-5405 SUITE 100

**PARCEL 50 AT THE MEADOWS**